

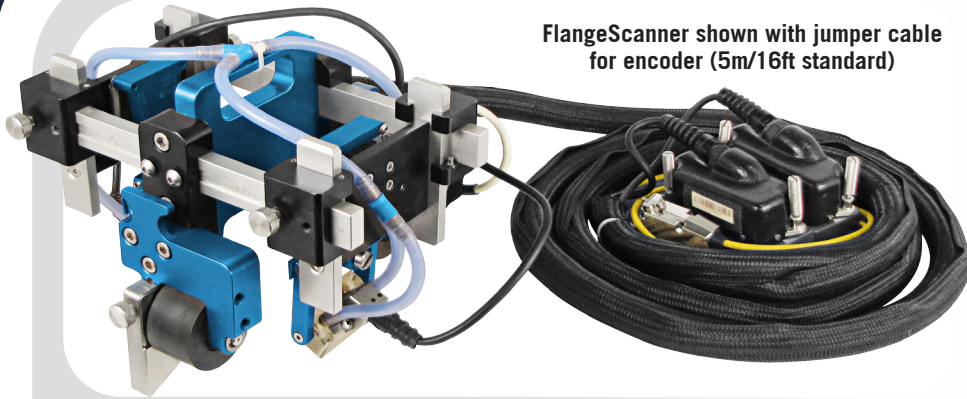
ES

# FLANGESCANNER

RAISED FACE FLANGE INSPECTION SOLUTION



# ES FLANGE SCANNER



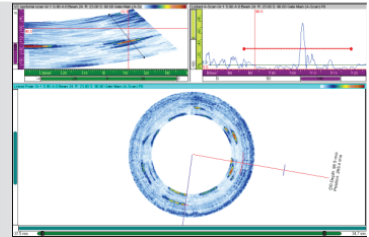
FlangeScanner shown with jumper cable for encoder (5m/16ft standard)



Actual scan data

## RATIONALE

- Raised face flange inspection solution
- In-service scanning capability saves time and money
- Eliminates need to remove bolts or disassemble flanges
- Repeatable and consistent results
- Standard package includes encoder and jumper cable, tool kit, carrying case and product documentation



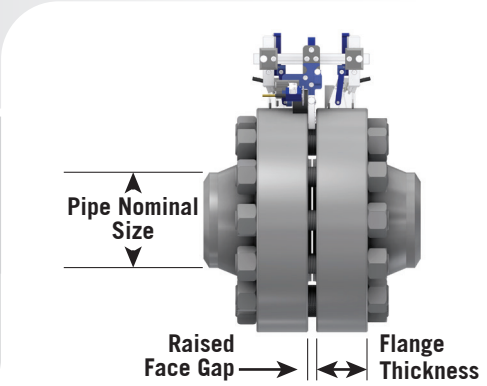
## BENEFITS

- Phased Array UT technology accurately acquires scan data from a single revolution of the flange
- Encoded scanner allows for accurate repeatable inspections for monitoring known defects
- Can perform online inspections on ferrous flanges, no need to stop production

FUNCTIONAL THICKNESS RANGE  
**SCANS ALL FLANGE SIZES FROM #150 TO #2500**

## OPTIONS

- Our BeamTool software makes it easy to design and simulate an inspection, while generating comprehensive documentation of your inspection technique
- InspectionBank provides effective process management and secure control of scan data, from acquisition to analysis reporting



## SPECIFICATIONS

